



**BOSTROM ZIP CLEAN® COVER INSTRUCTION**  
**READ ALL INSTRUCTIONS BEFORE USING**  
**SAVE THESE INSTRUCTIONS**  
**TO BE REMOVED BY END USER ONLY**

**CONTACT US:**

H.O. BOSTROM CO., INC.  
818 PROGRESS AVE., WAUKESHA, WI 53186  
SALES@HOBOSTROM.COM  
T 262.542.0222 | 800.332.5415 | F 262.542.9247

## **INSTRUCTIONS FOR USE AND MAINTENANCE OF ZIP CLEAN SEATS WITH ONE-PIECE BACKRESTS**

### **GENERAL PRODUCT INFORMATION**

Studies show that a wet-soap decon can reduce cancer causing contamination on gear by up to 85%.\* Zip Clean seats are designed with covers that can be zipped off, machine washed and hung to dry. Covers are made with Durawear Plus™ material which has a waterproof backing, dries quickly and is puncture and tear resistant. In addition, Zip Clean seats utilize a FoamBlock™ encapsulated barrier which reduces the absorption of gases into the seat. Encapsulated foam can be gently wiped clean if needed, further supporting the cleanability of the product.

### **DOCUMENT PURPOSE**

The purpose of this document is to demonstrate how to use and maintain Zip Clean covers. It is important that the servicer read and understand all safety information and instructions before starting the maintenance procedure.

### **SAFETY INFORMATION**

**⚠ DANGER** indicates a hazardous situation which, if not avoided, **WILL** result in death or serious injury.

**⚠ WARNING** indicates a hazardous situation which, if not avoided, **COULD** result in a death or serious injury.

**⚠ CAUTION** indicates a hazardous situation which, if not avoided, **COULD** result in minor or moderate injury.

**NOTICE** is used to address practices not related to physical injury.

**SAFETY INSTRUCTIONS** (or equivalent) indicate specific safety related instructions or procedures.

## DEFINITION OF TERMS

1. FoamBlock™ encapsulated foam barrier reduces gas absorption.



Figure 1

2. Zip clean Durawear Plus Cover Assemblies. (Extra Covers)



Figure 2



Figure 3

3. Labels.



Figure 4

ID Label



Figure 5

4. Hook and Loop.



Figure 6

## FLIP UP & FOLD AND HOLD SEAT BOTTOM COVER REMOVAL

1. Unzip zipper around front of cushion assembly. See Figure 7. Separate hook and loop at bottom of cushion assembly. See Figure 8.



Figure 7

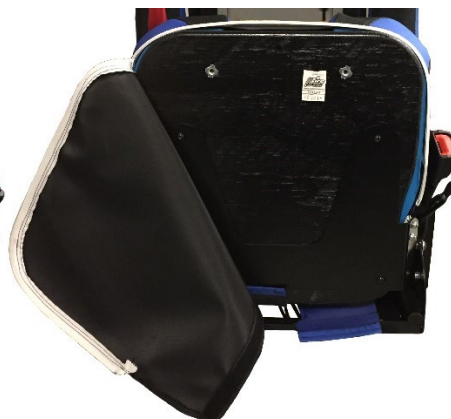


Figure 8

2. Pull cover up from rear of seat cushion. See Figure 9.



Figure 9

## FLIP UP & FOLD AND HOLD SEAT BOTTOM COVER INSTALLATION

**NOTICE:** The installer is liable for cover installation. Failure to properly install cover may result in the cover shifting and/or coming loose from its mounting.

1. Lay replacement cover on foam. See Figure 10.



Figure 10

**INSTRUCTIONS FOR USE AND  
MAINTENANCE OF ZIP CLEAN SEATS  
WITH ONE PIECE BACKRESTS**

H.O. BOSTROM CO., INC.  
[SALES@HOBOSTROM.COM](mailto:SALES@HOBOSTROM.COM)  
T 262.542.0222 | 800.332.5415

2. Starting at the front corners, roll cover down on all four corners as shown in Figure 11 and Figure 12.



Figure 11



Figure 12

3. Align notch on cover with hole on board. See Figure 13.



Figure 13



Align notch to hole

4. Close the zipper as shown in Figure 14. While closing the zipper, tuck care label into cover so it does not get caught in the zipper. See Figure 15.



Figure 14



Figure 15

Care Label

5. Ensure the wire harness attached to the seat cushion are protruding through the opening in the rear of the seat cover. See Figure 16.



Figure 16



6. Close hook and loop at bottom of seat cushion. See Figure 17. Installation complete.



Pull flaps up and around  
seat cushion to attach

Figure 17

## FIXED SEAT BOTTOM COVER REMOVAL

1. Roll up skirt. Unzip zipper around front of cushion assembly. See Figure 18.



Figure 18

2. Unzip rear zipper. See Figure 19. Remove cover from seat. Lower portion of the cover remains attached to seat.

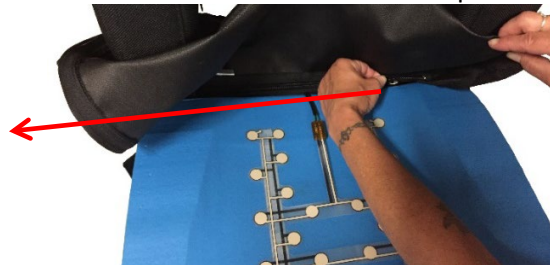


Figure 19

## FIXED SEAT BOTTOM COVER INSTALLATION

**NOTICE:** The installer is liable for cover installation. Failure to properly install cover may result in the cover shifting and/or coming loose from its mounting.

1. Lay the replacement cover on foam. See Figure 20.

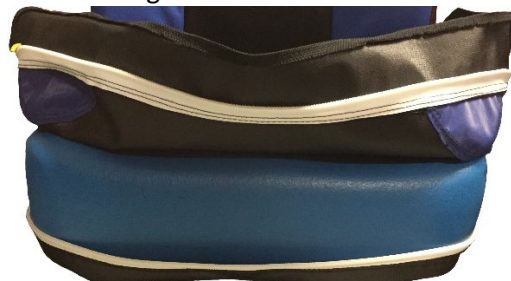


Figure 20

**INSTRUCTIONS FOR USE AND  
MAINTENANCE OF ZIP CLEAN SEATS  
WITH ONE PIECE BACKRESTS**

H.O. BOSTROM CO., INC.  
[SALES@HOBOSTROM.COM](mailto:SALES@HOBOSTROM.COM)  
T 262.542.0222 | 800.332.5415

2. Attach and close zipper at rear of seat cover. See Figure 21.

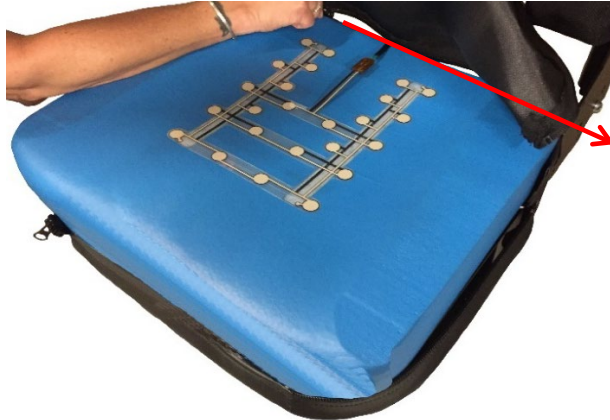


Figure 21

3. Roll cover down on all four corners of cover over foam. See Figure 22.



Figure 22

4. Attach and close zipper around front of seat cushion. See Figure 23. When zipping, pull zipper away from blue foam to avoid pinching the foam.

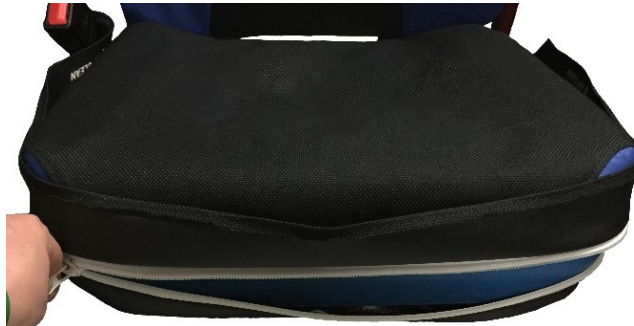


Figure 23

5. Roll skirt down to cover the zipper. See Figure 24.

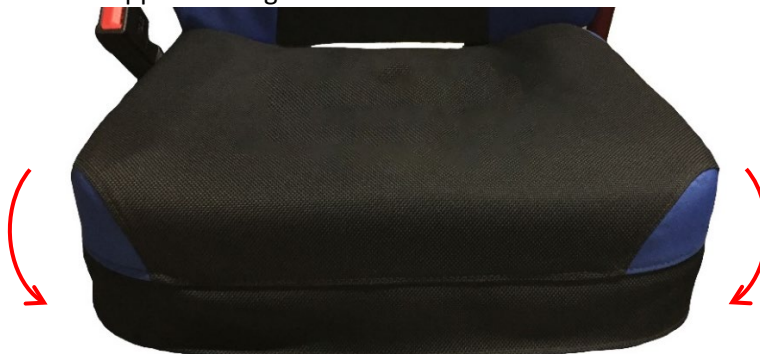


Figure 24

## BACKREST COVER REMOVAL

1. Separate hook and loop at bottom of cover. See Figure 25.



Figure 25

2. Unzip the easiest to access zipper. If cover has two zippers, unzip both zippers. See Figure 26.



Figure 26

3. Roll cover up. See Figure 27. Remove cover.



Figure 27

## BACKREST COVER INSTALLATION

**NOTICE:** The installer is liable for cover installation. Failure to properly install cover may result in the cover shifting and/or coming loose from its mounting.

1. Start by zipping one of the zippers that is most difficult to access, then place replacement cover over top of foam and frame. See Figure 28.



Figure 28

2. Roll cover down. See Figure 29.



Figure 29

3. Close zippers at rear of cover. See Figure 30.



Figure 30



**INSTRUCTIONS FOR USE AND  
MAINTENANCE OF ZIP CLEAN SEATS  
WITH ONE PIECE BACKRESTS**

H.O. BOSTROM CO., INC.  
[SALES@HOBOSTROM.COM](mailto:SALES@HOBOSTROM.COM)  
T 262.542.0222 | 800.332.5415

4. Pull hook at bottom of cover down and then towards the back of the seat. See Figure 31.



Figure 31

5. Pull hook up and fasten to the loop on the inside of the cover. See Figure 32.

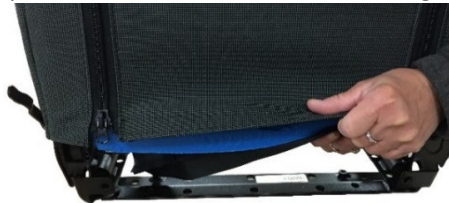


Figure 32

6. Hook and loop are to be fastened evenly. No hook should be visible when fastened together. See Figure 33.



Figure 33

7. Ensure cover is centered side to side on back foam. See Figure 34.



Figure 34

**BACKREST COVER WITH SEATBELT CUTOUT:**

The backrest covers pictured in Figure 35 and Figure 36 can be installed in the same way as steps 1 through 7. These covers have additional hook and loop for areas where the seat belt mountings protrude through the covers.



Front Side  
of Cover

Figure 35

Fasten hook and  
loop here after  
fastening at  
bottom of cover



Front Side  
of Cover

Figure 36

**BACKREST COVER WITH AIRBAG CUTOUTS:**

The backrest cover pictured in Figure 37 can be installed in the same way as steps 1 through 7. This cover has an opening on each side to allow for the deployment of side release air bags.

**⚠ WARNING:** Improper installation of back cover may result in air bags not deploying. Reference manufacturer installation instructions for side release air bags for proper installation techniques.



Openings in side  
of cover for side  
release air bags

Front Side  
of Cover

Figure 37

## WASHING INSTRUCTIONS

**NOTICE:** The end user is liable for proper care of the cover. It is important to read and understand all care instructions before performing cover replacement and maintenance.

Washing instructions can be found on the care labels of each cover. See Figure 38. Covers should only be washed in a firehouse extractor or front load washing machine to limit damage caused by top loading machine agitators. Covers should never be dried in a dryer.

Cleaning Recommendations:

- Wash with zipper and Velcro fastened when possible
- Use mild detergent only – same detergent used with turnout gear
- Max water temp is 105 degrees Fahrenheit
- Hang dry the cover by the loop, never apply heat

**INSTRUCTIONS FOR USE AND  
MAINTENANCE OF ZIP CLEAN SEATS  
WITH ONE PIECE BACKRESTS**

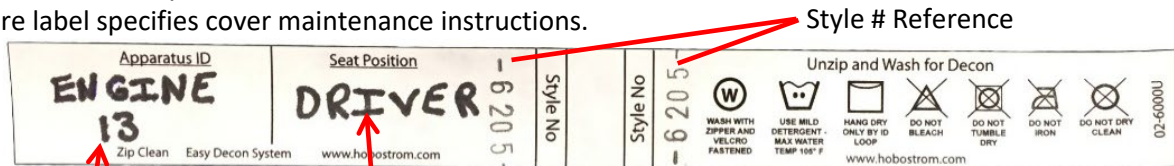
H.O. BOSTROM CO., INC.  
[SALES@HOBOSTROM.COM](mailto:SALES@HOBOSTROM.COM)  
T 262.542.0222 | 800.332.5415

- Do not bleach
- Do not iron
- Do not dry clean

## CARE LABELS

Care label loops are located on each zip off cover (upper portion) and have 3 functions.

1. Care label includes a space for the end user to write in the truck ID and seat position as a point of reference to identify the seat upon which the cover will be re-installed after washing.
2. The care label identifies the cover style number which matches the ID label style number on the base of the cushion assembly.
3. Care label specifies cover maintenance instructions.



Write in ID

Write in seat  
position

## ID LABELS

ID labels are located on the portion of the cover that does not get removed for washing. The ID label includes the style number that matches the style number on the care label. Any covers with matching style numbers can be used interchangeably. See Figure 39 and Figure 40.



Figure 39



## ZIP CLEAN COVER REPLACEMENT

To order replacement covers and retrofit kits, contact the H.O. Bostrom sales department at [sales@hobostrom.com](mailto:sales@hobostrom.com), (800)332-5415, OR (262)542-0222, option 2.